

LAMU ENVIRONMENT FOUNDATION



TWO YEAR REVIEW

JULY 2021 – 2023



CONTENTS

MISSION 04

HOWE WE WORK 06

THEORY OF CHANGE 08

STRATEGY 14

PROJECT HIGHLIGHTS 16

IMPACT 20

WHAT'S NEXT 24

TEAM 26



OUR MISSION

Supporting local conservation projects to protect and restore Lamu County now, and for the future.





HOW WE WORK

Lamu Environment Foundation (LEF) based on the Northern Kenyan coast was founded in 2021. We're dedicated to creating a network of environmental activists. We build the capacity of local organisations across the county who dedicate themselves to protecting and restoring their environment now and for the future.

We support local projects on small budgets that can unlock maximum returns for nature quickly. By maintaining our independence, we can direct funds where they're needed the most, while providing guidance, support and experience for passionate and *effective* local organisations.

We empower communities by supporting them with grants to design and implement locally appropriate projects that restore the environment. The projects we support fall within the following areas of interest; marine conservation, mangrove conservation, land restoration and regeneration and solid waste management.

THEORY OF CHANGE

We share a theory of change with Conservation Collective, our affiliate partner - see the diagram overleaf.

The activities of our network are divided into different layers and approaches, working in harmony to create long term, systemic change. We track, measure, and evaluate our efficacy based on how our activities (at project, foundation, and network level) drive social, cultural, and economic outcomes and ultimately achieve environmental impacts.



CONSERVATION COLLECTIVE ACTIVITIES



Launching new foundations



Fundraising



Knowledge sharing



Quality assurance & risk management



Speaking with a collective voice

LAMU ENVIRONMENT FOUNDATION ACTIVITIES



Working through communities



Encouraging more, and more effective, environmental philanthropy



Supporting grassroots environmental work



Raising awareness of the natural world and its value



Improving the effectiveness of projects that protect, preserve & regenerate environments



Promoting and supporting collaboration



Encouraging businesses and consumers to act more sustainably



Influencing governments and other institutions

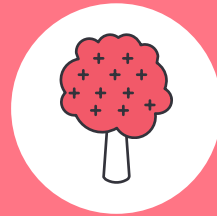
SOCIAL, CULTURAL & ECONOMIC OUTCOMES



People have a greater appreciation of the natural world



Governments, public institutions and media act in ways that support the natural world



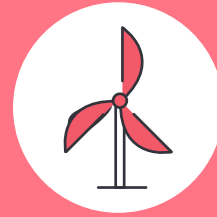
Businesses become nature positive



Changes in public behaviour to better preserve, protect and regenerate the natural world



Reduced waste and improved waste management



Increased use of low carbon technology and energy

ENVIRONMENTAL IMPACTS

Preserving, protecting and regenerating natural habits

Helping native species to thrive

Slowing down and adapting to climate change

Reducing pollution





“In the past 1.5 years, our beekeeping project has encountered many unexpected turns, as nature is often unpredictable. LEF has an in-depth understanding of the context and monitors the implementation closely, yet remains open to innovative ideas arising from our learning process. This supportive oversight and flexibility made it easy for us to respond to challenges and adapt our programming whenever it was needed to serve our communities better.

Szilvi Brajer,
Project Coordinator, Save Lamu Beekeeping

PROJECT HIGHLIGHTS



Beekeeping

Trained 10 community groups in beekeeping to reduce the dependence on mangrove cutting for income while instilling the importance of protecting the mangrove forests through active restoration.



HiMa Pate

Supported the creation of a forum theatre production to raise awareness of the importance of protecting the environment in Lamu's Pate Island. This mobilised communities to identify an environmental challenge and act on it.



Regenerative Agriculture

Trained over 40 people in regenerative agriculture and supported them in creating their own farms to reach more community members and create an agricultural revolution in Lamu.



Fanya Safi Waste Coalition

Enabled the collection of over 30 tonnes of plastic waste in 5 months across Lamu and Manda Islands. This kickstarted a plastic collection revolution and mobilised communities to continue regularly collecting waste for a small income.



LEF has really increased the capacity of our organisation through supporting various environmental conservation project in Lamu East, where most donors have neglected due to security and rough ocean risk factors

Jaffar Masoud,
President Faza Youth Action Group

OUR IMPACT

\$270k

Granted to local projects

\$1000k

Leveraged income to local initiatives

13

Projects supported

40+

People trained in regenerative agriculture

50+

Tonnes of plastic collected



3000+

Hectares of mangrove forests protected

Initiated the development of a community-led Marine Protected Area

Community-led environmental bye-laws enacted in 5 remote communities

10000s

Reached in theatre education projects

200

Fisherfolk engaged in sustainable workshops

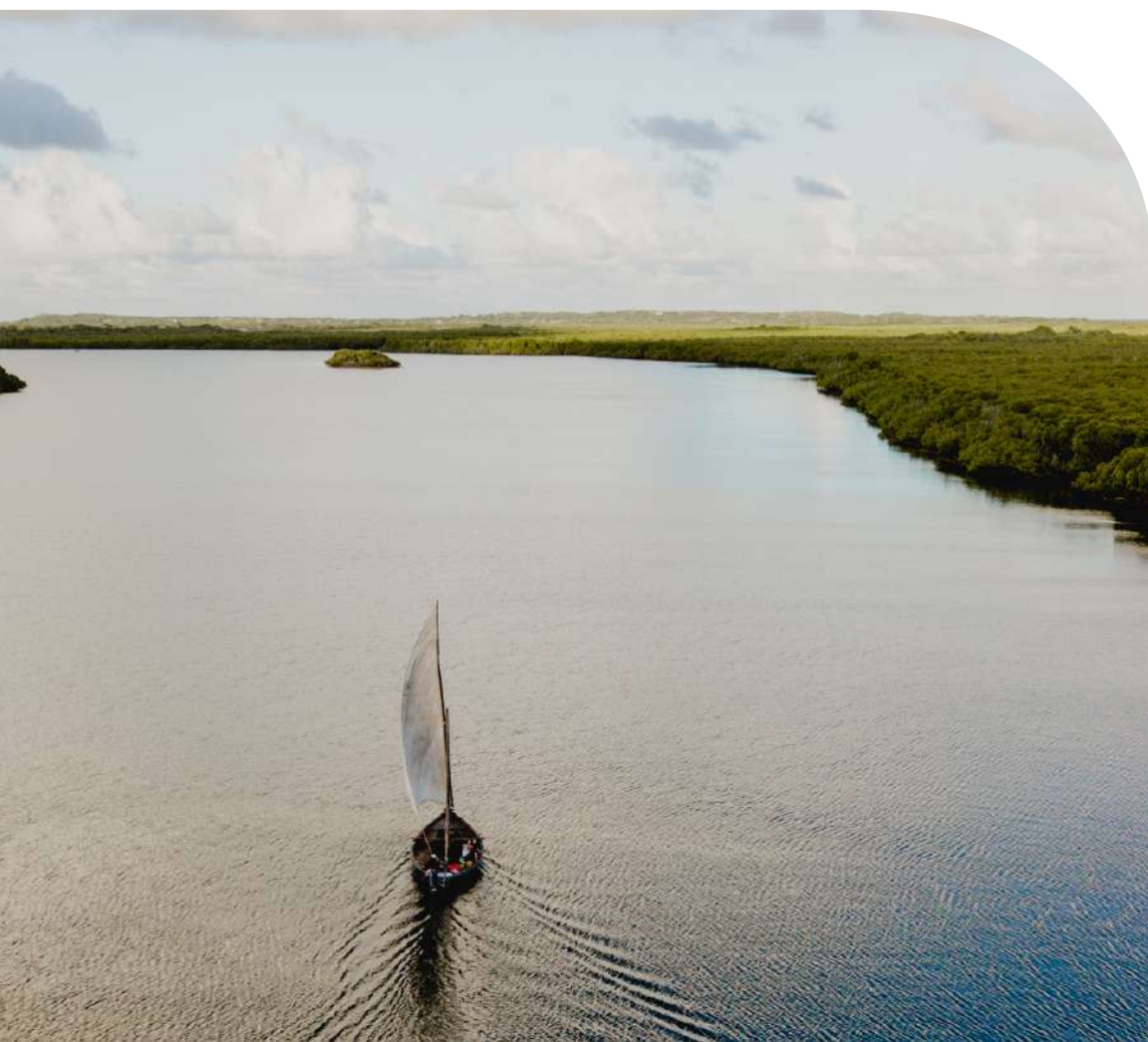
150

Alternative livelihoods created through beekeeping and crab farming



WHAT'S NEXT

In 2023, LEF funded an ambitious environmental assessment to identify the environmental challenges facing Lamu and where gaps in projects and funding exist. This assessment has informed our ongoing strategy for the next 3-years.



We have developed a core focus within each area of interest:



Marine Conservation

- We will develop more partners and build capacity on the ground as there are limited locally-led marine conservation organisations including creating a joined up turtle conservation task force along the coastline
- We will support projects to quantify the fishing capacity of Lamu and how this is changing
- We will advocate and facilitate partnerships and knowledge sharing opportunities between Kenyan coastal organisations



Mangrove Conservation

- We will support mangrove projects that follow best practices as recommended by scientific research such as the community based ecological mangrove restoration model. These projects go beyond planting and nursery creation for more sustainable regeneration of mangrove forests
- We will alleviate the pressure on forests by reducing the dependence on cutting mangroves such as ecotourism and supporting alternative livelihoods



Land Regeneration and Restoration

- We will continue to focus on transforming existing agricultural land to regenerative farmlands
- We will advocate for better freshwater management while lobbying for improved water shed management
- We will advocate for existing forest areas such as the Boni forest to remain protected
- We will support and advocate for regenerative tree planting and growing efforts



Solid Waste Management

- We will advocate and lobby governments to write, enact and implement waste management laws
- We will continue supporting and advising local organisations in setting up waste management initiatives
- We will support communities to reduce plastic consumption and become more aware of the impacts of plastic on the environment

TEAM

Lamu Based Executive Director

Hannah Evans

Financial Officer

Fridah Gitonga

STEERING COMMITTEE & CORE DONORS

Fiona Napier (Chair)

Robert Devereux

Carol Korschen

David Womble

Ben Goldsmith

Margot Kiser

Debra Mallowah

Mary Greenwell

Nikki Williams-Ellis

Anton Corbijn

Federico Pirzio-Biroli

ADVISORY BOARD

James Kamula – National Environment Management Authority

Daniel Paffenholz – Takataka Solutions

Anita Nyapala PhD – Local Environmental Specialist

Dominic Wodehouse PhD – Mangrove Action Project

Samuel Njoroge – Local Environmental Specialist

SUPPORTERS



TUSITIRI DHOW
PART OF THE
ENASOIT COLLECTION



QUINTESENTIALLY TRAVEL

PARTNERS

We support the



ANIMANDIAL
Bringing compassion to tourism

GET INVOLVED

LAMU ENVIRONMENT FOUNDATION

Support locally-led nature-based solutions in Lamu County. Donate Now and Spread the Word

 lamuenvironment

 Hannah@lamuenvironment.org

 <https://lamuenvironment.org>



CONSERVATION COLLECTIVE

Support locally-led nature-based solutions around the world. Donate Now and Spread the Word

 conservationcollectiveorg

 Jade@conservationcollective.org

 <https://conservation-collective.org>

